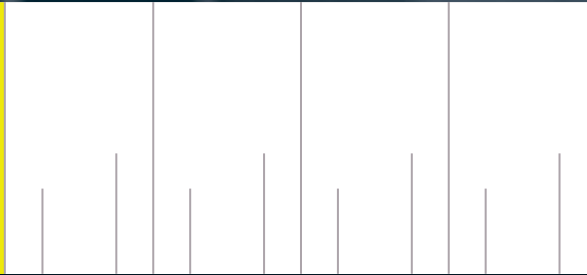
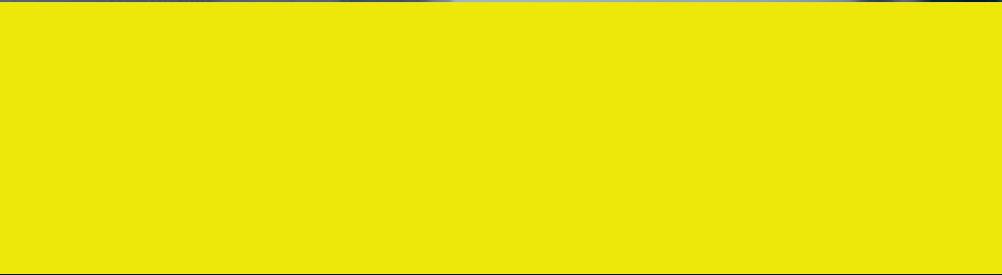
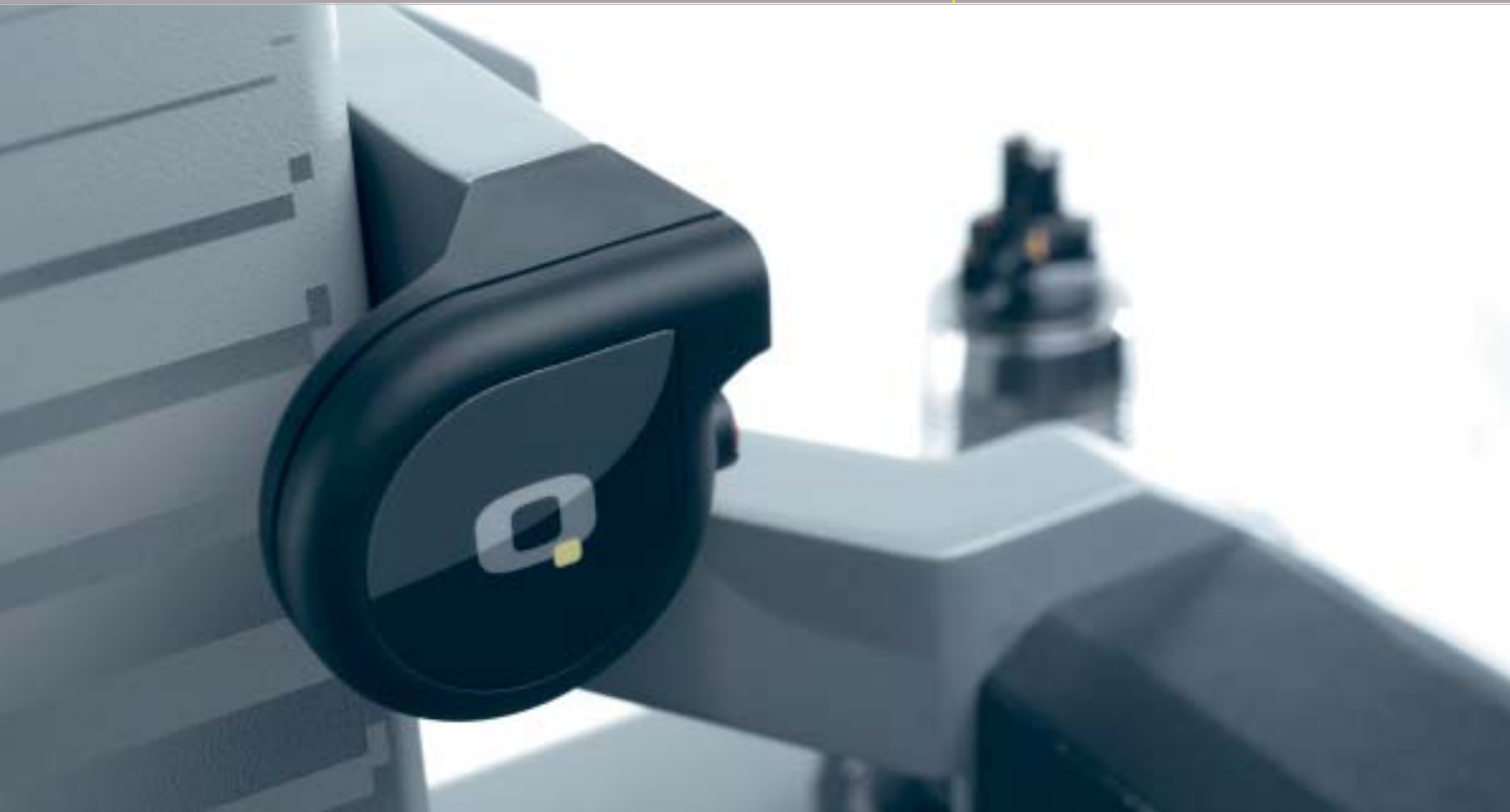


The New Generation of Tool Presetter
and Measuring Machines

smile



Reliable and μ -precise

The new ZOLLER "smile/saturn set"

The new ZOLLER "smile/saturn set" is a universal tool presetter and measuring machine for presetting and measuring every type of drilling, turning and cutting tool and for measuring grinding wheel packages. Specially designed for small-batch job order production, it can be used for cutting machines, machining centers, transfer machines, drilling machines, turning machines and for CNC-controlled grinding machines.

The new ZOLLER "smile/saturn set" is available in 5 different measuring ranges and is equipped with compact "saturn set" electronics, which makes it much easier to operate than previous tool presetter and measuring machines with a projector function. Fast, easy-to-operate and μ -precise, with repeatability!

Your benefits from a ZOLLER tool presetter and measuring machine "smile/saturn set":

- Available in 5 different measuring ranges
 - Electronic fine adjustment of the X-axis and Z-axis
 - Bellow-type cover over guides and measuring system
 - SK 50 high-precision spindle, integrated calibration edge, 4 x 90° locking mechanism
 - Membrane keyboard for power-operated spindle clamping and spindle locking
 - "saturn set" electronics with storage for 99 zero points and 300 tools
 - 32 bit Motorola processor
 - 12.1" TFT colour display with "quick touch" control
 - Sony camera with telecentric objective
 - Dynamic cross hairs
 - Projector function
 - Automatic zero point control
 - "C.R.I.S." function
 - Cutting edge inspection
 - Brand-name products for trouble-free operation, accuracy, long service life and low maintenance costs
- Options include**
- Tool management system "toolXpress"
 - Equipment table
 - Key storage
 - Label printer and board
 - Adapter for steep taper, hollow shaft taper, VDI cylinder shaft, etc.

Equipment table



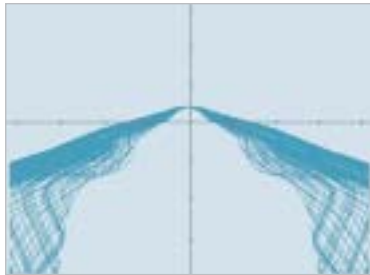
Close equipment table for exact and reliable set-up with leveling elements.



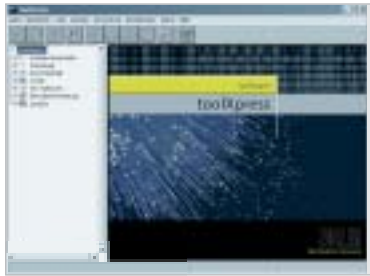
"saturn set" electronics



Image processing technology with 12.1" colour TFT monitor
 For fast and easy control via touchscreen. Large buttons make it very easy to operate.



"C.R.I.S." function
 Software for precise measuring of radiuses of spiral-fluted tools such as full radius cutters, milling heads, die-sinking cutters, grinding wheel packages, form cutters, etc.



"toolXpress"
 Software for managing complete tool or single components and parts lists. With control-oriented data output via interface and network.

Label printer



Printer for special thermal adhesive paper plain text labels.

Centre height measurement



Mechanical centre height measuring by means of dial gauges for normal and overhead cutting edges.

Board



Board for adapter and other accessories.

Key storage



Revolver for storage of Allan wrenches and other control tools.

Getting started in tool management

The new ZOLLER "smile/pilot 3.0"

The new ZOLLER "smile/pilot 3.0" will get you started in tool management. Available with 5 different measuring ranges and the new "pilot 3.0" electronics, it will give you the basis for the expansion stage to a comprehensive tool management system to secure the future of your company. The "pilot 3.0" software is expandable, so that you can constantly benefit from new developments at ZOLLER.

Fast and easy measuring and presetting is guaranteed. You can choose from various measuring programs, software for checking and monitoring tools, software for control-oriented data input and output, tool management software, software for net tool requirements calculation and software for numerous tool identification systems. Choose ZOLLER "smile/pilot 3.0" and the future is yours.

Your benefits from a ZOLLER tool presetter and measuring machine "smile/pilot 3.0":

- Available in 5 different measuring ranges
 - Electronic fine adjustment of the X-axis and Z-axis
 - Bellow-type cover over guides and measuring system
 - SK 50 high-precision spindle, integrated calibration edge, 4 x 90° locking mechanism
 - Membrane keyboard for power-operated spindle clamping and spindle locking
 - "pilot 3.0" electronics with storage for 999 zero points and more than 15,000 tools
 - DELL Optiplex computer with 17" TFT colour display and "quick touch" control
 - Sony camera with telecentric objective
 - Dynamic cross hairs
 - Projector function
 - Automatic zero point control
 - "C.R.I.S." function for precise measuring of radiuses of spiral-fluted tools
 - Cutting edge inspection
 - Equipment table
- Options include**
- Adapter for steep taper, hollow shaft taper, VDI cylinder shaft, etc.
 - Key storage
 - Printers of various models
 - Boards
 - Additional "pilot 3.0" software, see brochure: "pilot 3.0" software

Laser printer



Laser printer for lists and graphics in black/white. A total of 5 different printers are available.

"pilot 3.0" electronics



Image processing technology in a new dimension

It was never so easy to measure tools quickly and precisely—child's play. 17" TFT colour display with dual control, touchscreen and keyboard.



"pilot"/"compass"

"pilot"/"compass" shows the user where to find the cutting edge to be measured. Without extra training you are able to measure/preset multi-blade tools easily and quickly.



Data output

With "pilot 3.0" the control-oriented data output is quite simple and absolutely reliable. Measure/preset tools, print results and send control-oriented data.

Boards



Boards are available for adapters and printers. With variable mounting.

Centre height measurement



Electronic centre height measurement with monochrome camera and "InScreen" display using Windows technology.

Tool identification "MSLE"



Separate read/write station for tool identification for manual reading and writing of the code media. Suitable for chip layer in pullstud and/or driving slot of the tool system. Exchangeable adapter sleeves for steep taper, hollow shaft taper, Capto, etc.

Highlights

Everything at a glance

"smile 800"

Your benefits from a ZOLLER tool presetter and measuring machine:

- Productivity increase of at least 15 % due to increased machine life.
- You reduce rejects as a result of measured and preset tools.
- You increase the service life of your tools while reducing tool costs.
- You reduce tool breakage and therefore automatically reduce tool costs.
- You prevent tool crashes with measured and preset tools and therefore significantly reduce repair costs and eliminate downtimes.
- You receive consistent and plannable machining rates, because tools are always consistently preset and measured.
- Control-oriented data transfer prevents input errors and crashes.
- The automatic zero point control prevents the wrong tool from being installed on the machine, thus eliminating crashes and downtime.
- You check your tools at the time of receipt to ensure excellent quality. This also reduces tool costs.
- You reduce machine set-up times with preset and measured tools. You save an average of at least 3-5 minutes in set-up time for each individual tool.
- You check the wear of the tools with the cutting edge inspection and reduce tool costs through timely resharping.
- With a ZOLLER tool presetter and measuring machine, you will save at least 15,000 € per year / per shift.



A ZOLLER tool presetter and measuring machine is your profit-maker!

1 High-precision spindle SK 50 – vacuum

The SK 50 high-precision spindle is equipped with an integrated calibration edge, thus eliminating separate zero gauges. Locking mechanism 4 x 90° for turning machine tool holders and pneumatic spindle clamping. Concentric precision 0.002 mm. Easy to turn, with no stick-slip effect.

2 Adapters, from left to right:

- Steep taper adapter: case-hardened, burnished and polished with integrated calibration edge. Available: steep taper 50/SK 10 – KS 45.
- Hollow shaft adapter: case-hardened, burnished and polished with integrated calibration edge. Manual tool clamping for hollow shaft taper. Available: HSK A 25 – HSK F 125.
- VDI cylinder shaft adapter: case-hardened, burnished and polished with integrated calibration edge. Standard polygon receiving bore. Available: VDI 20 – VDI 80.

ZOLLER provides adapters for all tool shafts. Tell us what you need; ZOLLER delivers.



The best components on the world market

"smile 600"

"smile 400"



Brand-name products

Brand-name products for long service life, low maintenance costs, high reliability and accuracy. ZOLLER uses only brand name products, such as Heidenhain measuring systems, Sony cameras, Motorola and Intel processors, THK guides, NTN bearings and Bosch pneumatics.

3 Heidenhain measuring system

Ultra-precise positioning in the linear X- and Z-axes.



4 Bosch pneumatics

Reliability and safety for all power-actuated functions.



5 THK recirculating ball bearing guide

Smooth gliding of the measuring slide with no stick-slip effect. 5 times for each unit!



6 Sony camera

High-quality CCD camera and telecentric objective for the superior ZOLLER image processing technology.



Measuring ranges

Machine	Length Z-axis	Radius X-axis	Diameter	Gap gauge
smile 400	400 mm	200 mm	400 mm	/
smile 400/6	400 mm	300 mm	600 mm	100 mm
smile 600	600 mm	300 mm	600 mm	100 mm
smile 600/4	600 mm	200 mm	400 mm	/
smile 800	800 mm	300 mm	600 mm	100 mm

7 One-hand control knob



The one-hand control allows the operator to easily move the measuring slide to the tool cutting edge, eliminating stress and enabling fatigue-free and time-saving operation.

8 Membrane keyboard



With the membrane keyboard, you can stop the SK 50 high-precision spindle at any position and actuate the 4 x 90° locking mechanism.

9 Right-hand control



Setting tools with „right-hand control“ is a prerequisite for an ergonomic design, which is standard at ZOLLER.

The new generation of tool presetter and
measuring machines

smile

Do you want to know more?

We will be glad to talk to you in
person or send you additional brochures
on products and our company.
Just call or send us an e-mail:

Phone +49 7141 7005-0

E-mail post@zoller.info

Or visit our website:

www.zoller.info

E. Zoller GmbH & Co. KG
Einstell- und Messgeraete
Planckstraße 10
D-71691 Freiberg/Neckar
P. O. Box 11 61
D-71687 Freiberg/Neckar
Phone +49 7141 7005-0
Fax +49 7141 72902
post@zoller.info
www.zoller.info

ZOLLER
measure fascination®